



 Chef Works®

URBAN COLLECTION™

NEW PRODUCT CATALOG

THE URBAN UNIVERSE EXPANDED

The latest additions to our already popular Urban Collection™ share the same rebellious spirit and street-inspired details as their predecessors. We matched artisan fabrics with on-trend designs to create a line of culinary and hospitality apparel that is edgy, efficient and functional.

Special thanks to the following restaurants:

- Punch Bowl Social, San Diego, CA
- Fort Oak, San Diego, CA

[ON HER] WOMEN'S CHARLESTON SHIRT | SHC02W-NAT | MEDFORD SHORT BIB APRON | ABN02W-JAD

CONTENTS



06
SEATTLE
APRONS



11 & 17
ADDITIONAL
NECK STRAPS



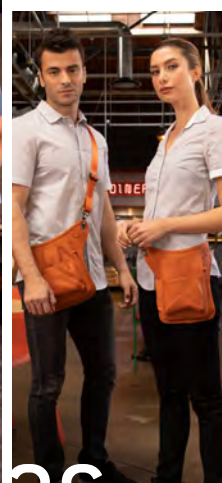
12
OLYMPIA
APRONS



18
MEDFORD
APRONS



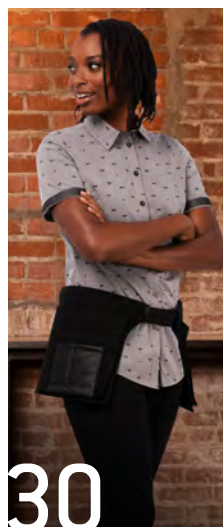
22
LOGAN
APRONS



26
SYRACUSE
WAIST BELT



[ON HIM CENTER] MEN'S CHARLESTON SHIRT | SHC07-NAT | MEDFORD HALF BISTRO APRON | AHN06-CRL [ON HIM RIGHT] MEN'S CHARLESTON SHIRT | SHC07-NAT | MEDFORD HALF BISTRO APRON | AHN06-NAT



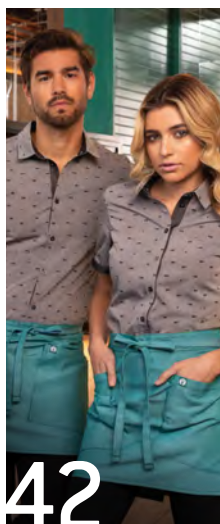
30
CHEYENNE
HIP BAG



34
STRIPED
T-SHIRTS



38
DEFINITY
SHIRTS



42
OMAHA
SHIRTS



46
CHARLESTON
SHIRTS



50
MALIBU
SHIRTS



THE APRONS


[ON HIM] MEDFORD BIB APRON | ABN02-FRB

[ON HIM] MEDFORD HALF BISTRO APRON | AHN06-FRB



UNPARALLELED VERSATILITY

Groundbreaking designs and unprecedented versatility highlight the newest aprons in the Urban Collection™. From cross-back conversions and cleverly-placed pockets, to trend-setting waistbelts and pops of color, these new aprons are fun and stylish.

 ChefWorks

URBAN COLLECTION

[ON HER] MEDFORD SHORT BIB APRON | ABN02W-FRB

[ON HER] MEDFORD HALF BISTRO APRON | AHN06-FRB



SEATTLE

APRONS

[ON HIM] SEATTLE BIB APRON | ABS02-BLK | MEN'S DEFINITY SHIRT | TSME-BLK [ON HER CENTER] WOMEN'S DEFINITY SHIRT | TSW0-BLK | SYRACUSE WAIST BELT | XNN03-MUS
[ON HER RIGHT] SEATTLE HALF BISTRO APRON | AHN07-BLK | WOMEN'S DEFINITY SHIRT | TSW0-BLK

A BOLD STATEMENT

There's a cool and unmistakable vibe on the streets of Seattle. It's a city that's constantly growing, but remains true to its roots. The Seattle family of aprons echo that vibe. With reversible and interchangeable straps, you get an always-evolving look that is never out of style.

AVAILABLE COLORS



APRON | NECK STRAP
BLU (blue) | (white/navy)



APRON | NECK STRAP
BLK (black) | (mustard/black)



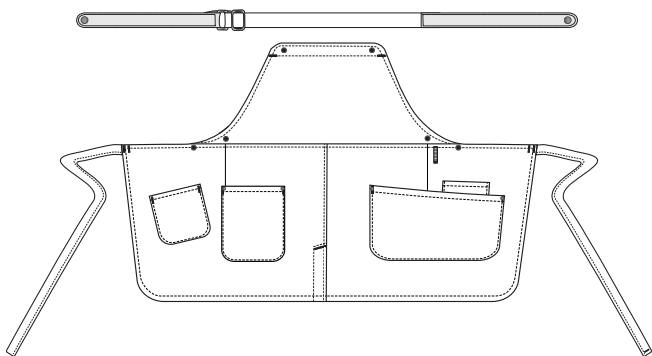
APRON | NECK STRAP
TAU (taupe) | (orange/camel)



[ON HER LEFT] SEATTLE BIB APRON | ABS02-BLU | WOMEN'S CHARLESTON SHIRT | SHC07W-BLU [ON HIM] SEATTLE BIB APRON | ABS02-BLK | MEN'S DEFINITY SHIRT | TSME-BLK
[ON HER RIGHT] SEATTLE BIB APRON | ABS02-TAU | WOMEN'S CHARLESTON SHIRT | SHC07W-NAT

SEATTLE BIB APRON

The Seattle Bib Apron heralds in a new era of culinary and hospitality apparel while capturing the cool vibe of the Pacific Northwest. The herringbone weave makes a bold statement, while the reversible neck strap and cross-back capability put its versatility on display for all to see.



SPECIFICATIONS

- 6.8 oz. 65/35 poly/cotton
- Herringbone weave
- Front slit
- {1} Reversible/adjustable/removable neck strap included
- Double-needle stitching on pockets

ABS02 | 31"L x 38"W

AVAILABLE COLORS



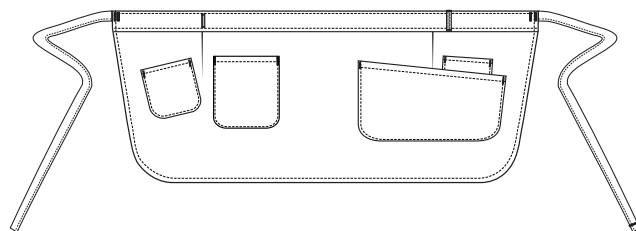
EACH APRON COMES WITH {1} REVERSIBLE STRAP



[ON HIM] SEATTLE BIB APRON | ABS02-BLU | MEN'S OMAHA SHIRT | SHC10-WHT

SEATTLE HALF BISTRO APRON

Free your creativity and embrace the bold aesthetics of the Seattle Half Bistro Apron. Whether you're a server grinding through a shift, a bartender hand-crafting the perfect cocktail or a caffeine-fueled barista perfecting your latte art, the Seattle Half Bistro Apron will be there to protect you every step of the way.



SPECIFICATIONS

- 6.8 oz. 65/35 poly/cotton
- Herringbone weave
- Four utility pockets
- Curved hem
- Double-needle topstitching on pockets
- Reinforced stress points

AHN07 | 16"L x 38"W

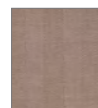
AVAILABLE COLORS



APRON: BLU
(blue)



APRON: BLK
(black)



APRON: TAU
(taupe)



EXTRA ROOMY POCKETS

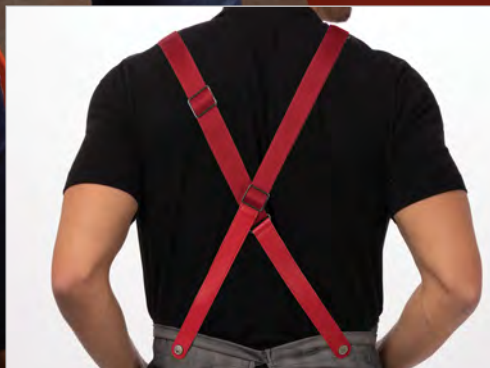


YOUR NEW FAVORITE APRON HAS MORE THAN ONE LOOK

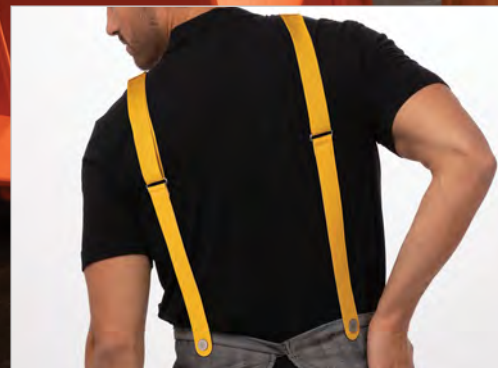
3 WAYS TO WEAR IT:



1: WEAR IT AS A NECK STRAP (REQUIRES 1 STRAP)



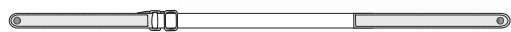
2: WEAR IT AS A CROSS-BACK (REQUIRES 2 STRAPS)



3: PULL IT UP OVER THE SHOULDERS (REQUIRES 2 STRAPS)

SEATTLE BIB APRON ADDITIONAL APRON STRAPS

Bring out your personality with interchangeable neck straps for your Chef Works® Olympia or Seattle Bib Aprons. Find the look that syncs with you and your brand.



SPECIFICATIONS

- 100% polyester, Non-textile: polyurethane
- Adjustable metal slider
- Compatible with Olympia and Seattle Bib Apron
- Snap closure
- One snap branded with ChefWorks® logo

XNS05 | 34"L



OLYMPIA

APRONS



WEAR IT, FLIP IT, LOVE IT

Who do you want to be today? With the Olympia family of plaid reversible aprons, the choice is yours. Embrace the evergreen spirit of Washington's capital city with two on-trend plaid looks and let your outdoorsy side guide you. Pick a side, or flip it around for a fresh and inspired style. Go beyond color-coordinating your look -- color-coordinate your personality.

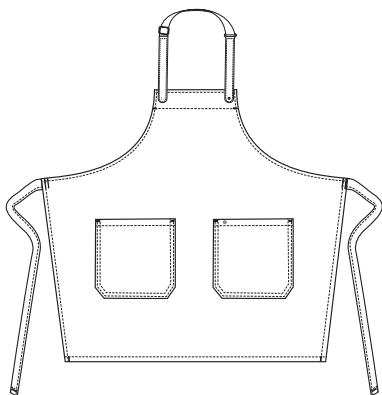
AVAILABLE COLORS



[ON HER] OLYMPIA BIB APRON | ABR01-BRO | WOMEN'S OMAHA SHIRT | SHC10W-WHT [ON HIM CENTER] OLYMPIA BIB APRON | ABR01-GRY | MEN'S MALIBU SHIRT | SHC09-GRY
[ON HIM RIGHT] OLYMPIA BIB APRON | ABR01-NAV | MEN'S DETROIT STRIPED SHORT-SLEEVE SHIRT | SKS003-BLK

OLYMPIA BIB APRON

Changing looks has never been easier with the Reversible Plaid Olympia Bib Apron. Double the durability is twice as nice when you throw in spacious pockets and reinforced stitching. Swap out the neck straps for a different color to make it your own.



SPECIFICATIONS

- 6.7 oz. 100% cotton
- Reversible plaid
- (1) XNS05 (Adjustable/removable neck strap) included
- Two spacious hip patch pockets on front and reverse
- Double-needle stitching
- Reinforced stress points

ABR01 | 32"L x 36½"W



AVAILABLE COLORS



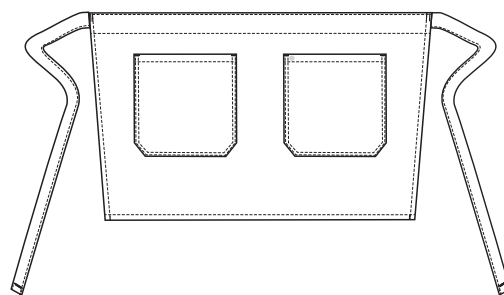
ADJUSTABLE/REMOVABLE NECK STRAP WITH SNAP CLOSURE



OLYMPIA

HALF BISTRO APRON

Every server and bartender needs an apron in their repertoire that deviates from the beaten path. Take a free-spirited approach with the Reversible Plaid Olympia Half Bistro Apron and explore the world around you. Fun and liberating, this apron gives you everything you need to express yourself – twice.



SPECIFICATIONS

- 6.7 oz. 100% cotton
- Reversible plaid
- Two spacious hip patch pockets on front and reverse
- Double-needle stitching
- Reinforced stress points

AHR01 | 19"L x 31½"W



AVAILABLE COLORS



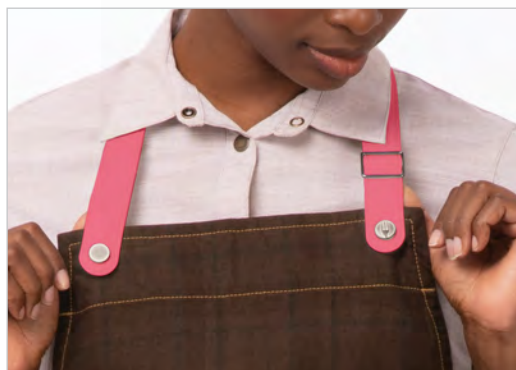
REVERSIBLE PLAID





OLYMPIA BIB APRON ADDITIONAL APRON STRAPS

Bring out your personality with interchangeable neck straps for your Chef Works® Olympia or Seattle Bib Apron. Find the look that syncs with you and your brand.



MIX AND MATCH NECK STRAPS ON THE SEATTLE AND OLYMPIA BIB APRONS FOR A FUN AND UNIQUE LOOK. (SOLD SEPERATELY)

SPECIFICATIONS

- 100% polyester, Non-textile: polyurethane
- Adjustable metal slider
- Compatible with Olympia and Seattle Bib Aprons
- Snap closure
- One snap branded with Chef Works® logo

XNS05 | 34"L



MEDFORD

APRONS



[ON HER]
MEDFORD HALF BISTRO APRON | AHN06-FRB
WOMEN'S DEFINITY SHIRT | TSW0-CHR

[ON HIM]
MEDFORD BIB APRON | ABN02-FRB
MEN'S DEFINITY SHIRT | TSME-CHR

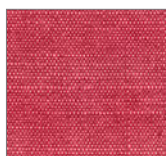
[ON HER]
MEDFORD SHORT BIB APRON | ABN02W-FRB
WOMEN'S DEFINITY SHIRT | TSW0-CHR

[ON HIM]
MEDFORD HALF BISTRO APRON | AHN06-FRB
MEN'S DEFINITY SHIRT | TSME-CHR

DARE TO *BE* CREATIVE

Deep in the heart of Oregon's Rogue Valley is a city that liberates the spirit and breaks away from the norm. Medford embraces a world that's bursting with color. With Medford's crosshatch fabric as your guide, you can go on a color-covered adventure that pops with every turn. Exploration has its advantages. Dare to be creative.

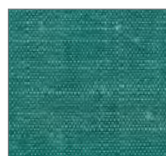
AVAILABLE COLORS



CRL (coral)



FRB (french blue)



JAD (jade)



NAT (natural)

The Medford aprons are packed with pockets!



[ON HER]
MEDFORD SHORT BIB APRON | ABN02W-CRL
WOMEN'S MALIBU SHIRT | SHC09W-GRY

[ON HIM]
MEDFORD BIB APRON | ABN02-CRL
MEN'S MALIBU SHIRT | SHC09-GRY

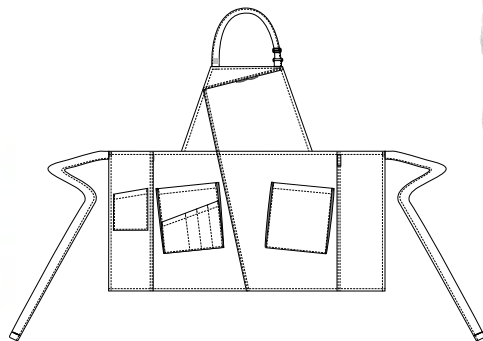
[ON HER]
MEDFORD HALF BISTRO APRON | AHN06-CRL
WOMEN'S MALIBU SHIRT | SHC09W-GRY

[ON HIM]
MEDFORD BIB APRON | ABN02-CRL
MEN'S MALIBU SHIRT | SHC09-GRY



MEDFORD BIB APRON

Did someone say color? The Medford Bib Apron isn't any old splash of color — it's bursting with playful personality that makes long shifts shorter and work more fun. Add a little smile to your style.



SPECIFICATIONS

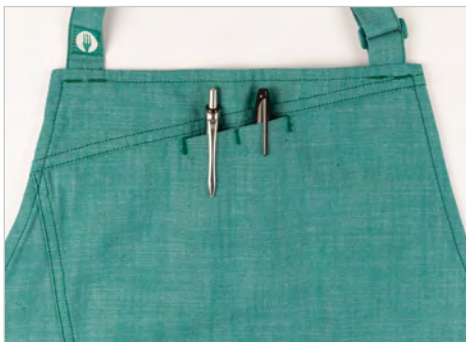
- 6.2 oz. 65/35 poly/cotton
- Crosshatch fabric
- Adjustable neck buckle
- Concealed pen pockets on chest
- Spacious left hip pocket
- Spacious right hip pocket with pencil divides
- Back pocket
- Slit-seam opening
- Belt loop for ties
- Double-needle stitching
- Reinforced stress points

ABN02 | 31"L x 38"W

AVAILABLE COLORS



CRL (coral) FRB (french blue) JAD (jade) NAT (natural)

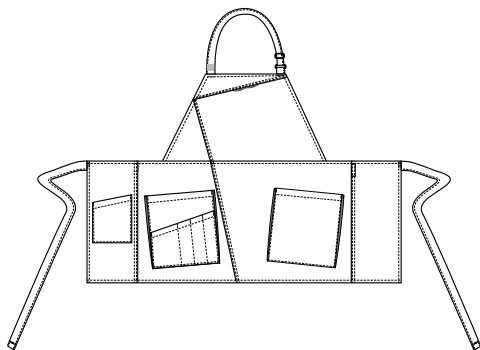


CONCEALED PEN POCKETS ON CHEST



MEDFORD SHORT BIB APRON

Glide with every stride and let your colorful personality shine through for the entire world to see. In the Medford Short Bib Apron, you're the pop of color that brightens everyone around you.



SPECIFICATIONS

- 6.2 oz. 65/35 poly/cotton
- Crosshatch fabric
- Front slit
- Adjustable neck buckle
- Concealed pen pockets on chest
- Spacious left hip pocket
- Spacious right hip pocket with pencil divides
- Back pocket
- Slit-seam opening
- Belt loop for ties
- Double-needle stitching
- Reinforced stress points

ABN02W | 25"L x 38½"W

AVAILABLE COLORS



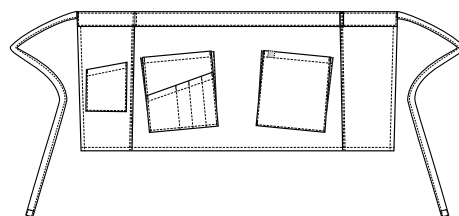
CRL (coral) FRB (french blue) JAD (jade) NAT (natural)



SPACIOUS RIGHT HIP POCKET WITH PENCIL DIVIDES

MEDFORD HALF BISTRO APRON

Your job doesn't define you. You define your job. And the Medford Half Bistro Apron, popping with personality and color, helps you carve out your niche. Servers and bartenders will love it because it's got durable crosshatch fabric. Plus, there are four color options to fit your brand.



SPECIFICATIONS

- 6.2 oz. 65/35 poly/cotton
- Crosshatch fabric
- Roomy left hip pocket
- Spacious right hip pocket with pencil divides
- Back pocket
- Slit-seam opening
- Belt loop for ties
- Double-needle stitching
- Reinforced stress points

AHN06 | 16"L x 38"W

AVAILABLE COLORS



CRL (coral) FRB (french blue) JAD (jade) NAT (natural)



SLIT-SEAM OPENING



LOGAN

APRONS

[ON HER] LOGAN HALF BISTRO APRON | AHN08-CLA | WOMEN'S MALIBU SHIRT | SHC09W-NAV [ON HIM CENTER] LOGAN BIB APRON | ABN03-CLA | MEN'S MALIBU SHIRT | SHC09-NAV
[ON HIM RIGHT] LOGAN BIB APRON | ABN03-CLA | MEN'S MALIBU SHIRT | SHC09-NAV

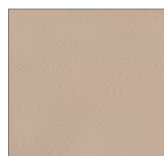
UNLEASH *YOUR* POTENTIAL

There are more than two dozen cities in the United States named Logan. From the vibrant South to the West Coast and the snow-capped mountains of Utah in between, Logan celebrates a wide range of textures, colors and flavor profiles. Soft, pristine edges flank Logan's ready-for-anything design that can tackle all tasks.

AVAILABLE COLORS



CLA (clay)



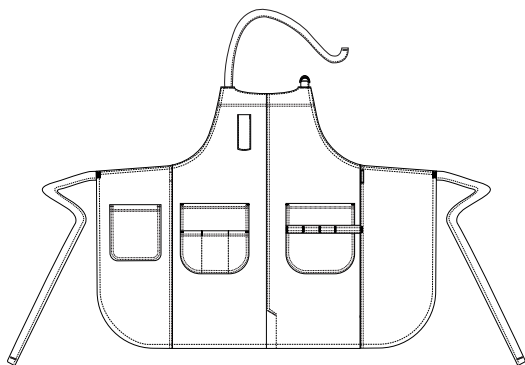
KHA (khaki)

You do you in the Logan and unleash your full potential.



LOGAN BIB APRON

Step up to any and all challenges with the Logan Bib Apron, where the only limits are your imagination. The Logan Bib Apron works for the front or back of the house thanks to its many pockets. Left and right utility pockets mean you have room for everything you need. And don't forget the cleverly-placed back pocket.



SPECIFICATIONS

- 7.4 oz. 65/35 poly/cotton
- Adjustable neck strap w/D-ring
- Right utility pocket with top divided pockets
- Left utility pocket with loops
- Back pocket
- Curved hem
- Slit-seam front
- Belt loop for ties
- Double-needle stitching
- Reinforced stress points
- Curved neckline

ABN03 | 30"L x 38"W

AVAILABLE COLORS



CLA (clay)

KHA (khaki)



ADJUSTABLE NECK STRAP W/D-RING



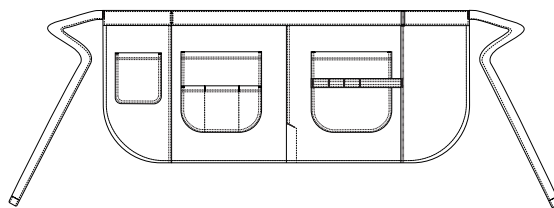
LOGAN BIB APRON | ABN03-KHA | MEN'S OMAHA SHIRT | SHC10-WHT



LOGAN

HALF BISTRO APRON

The curved hem and soft edges on the Logan Half Bistro Apron are clean and aesthetically pleasing. But at its core it's durable and ready for anything your job can throw at it. It's built tough, with double-needle stitching and reinforced stress points, so you never have to worry about Logan letting you down.



SPECIFICATIONS

- 7.4 oz. 65/35 poly/cotton
- Right utility pocket w/divides
- Left utility pocket with loops
- Back pocket
- Curved hem
- Belt loop for ties
- Front slit
- Double-needle stitching
- Reinforced stress points

AHN08 | 17"L x 38"W

AVAILABLE COLORS



CLA (clay)

KHA (khaki)



SLIT-SEAM OPENING

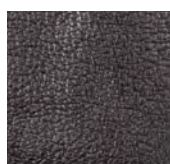


SYRACUSE

WAIST BELT

BE EXTRA ORGANIZED

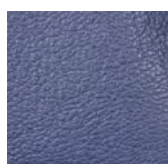
AVAILABLE COLORS



BLK (black)



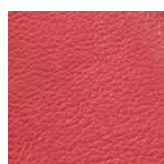
CML (camel)



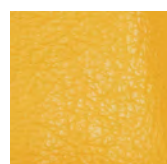
DEN (denim)



GRY (gray)



MER (merlot)



MUS (mustard)



ORA (orange)

The Syracuse Waist Belt can be worn cross-body or around the waist. It features two front pockets, a utility pocket and an adjustable strap.

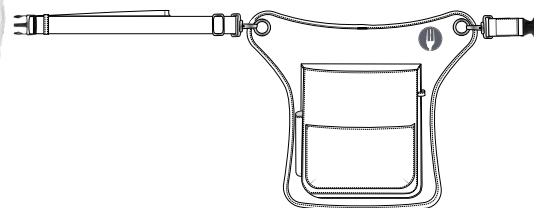


[ON HER LEFT] WOMEN'S CHARLESTON SHIRT | SHC07W-BLK | SYRACUSE WAIST BELT | XNN03-MUS [ON HIM] MEN'S CHARLESTON SHIRT | SHC07-BLK
[ON HER RIGHT] WOMEN'S CHARLESTON SHIRT | SHC07W-BLK | SYRACUSE WAIST BELT | XNN03-MUS



SYRACUSE WAIST BELT

The Syracuse Waist Belt was designed specifically for waitstaff and is a modern and stylish alternative to an apron. It's perfect for the bartender who is quick on their feet, the server who is a master of efficiency or the sommelier who likes to be extra organized. Use the multiple pockets to keep all of your vital tools within an arm's reach.



SPECIFICATIONS

- 14 oz. Body: 100% polyester, Coating: PU
- Two front pockets
- One utility pocket
- Utility loop
- Clasp and grommet detail
- Wear cross-body or around waist
- Adjustable strap/buckle

XNN03 | BAG: 10½" L x 8" W STRAP EXTENDS TO: 65"

AVAILABLE COLORS

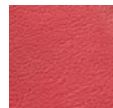


BLK [black]

CML [camel]

DEN [denim]

GRY [gray]



MER [merlot]



MUS [mustard]



ORA [orange]



MULTIPLE POCKETS



XNN03-DEN

SYRACUSE WAIST BELT | XNN03-DEN
WOMEN'S CHARLESTON SHIRT | SHC07W-BLU



XNN03-CML

SYRACUSE WAIST BELT | XNN03-CML
WOMEN'S OMAHA SHIRT | SHC10W-WHT



XNN03-MUS

SYRACUSE WAIST BELT | XNN03-MUS
MEN'S OMAHA SHIRT | SHC10-GRY



XNN03-GRY

SYRACUSE WAIST BELT | XNN03-GRY
MEN'S DETROIT SHIRT | SKL001-BLK



XNN03-BLK

SYRACUSE WAIST BELT | XNN03-BLK
MEN'S GINGHAM DRESS SHIRT | D500-BWC



XNN03-ORA

SYRACUSE WAIST BELT | XNN03-ORA
MEN'S CHARLESTON SHIRT | SHC07-BLK



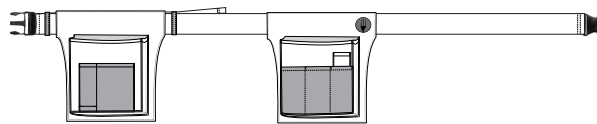
CHEYENNE

DOUBLE HIP BAG

STAGGERING STORAGE & REMARKABLE CAPACITY

CHEYENNE DOUBLE HIP BAG

There's no need to overthink things when you're wearing the Cheyenne Double Hip Bag. It says what it does by delivering storage and capacity. Never be without your wine key, pens, tablet, lighter and every other tool that you can think of. Cheyenne has you covered with eight total pockets – including two oversized main pockets and six utility pockets.

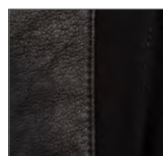


SPECIFICATIONS

- 9.6 oz. 97/3 cotton/rayon
- Eight total pockets
- Two oversized front pockets
- Six utility pockets
- Adjustable waist belt
- Contrast pockets

XNN04 | BAG: 10½" L x 8" W STRAP EXTENDS TO: 47½"

AVAILABLE COLOR



BLK (black)

Everything you need, right where you need it.



A man and a woman are modeling blue shirts. The man, on the left, is wearing a short-sleeved, horizontally striped blue shirt and dark jeans. He is looking off to the side. The woman, on the right, is wearing a long-sleeved, solid blue polo shirt and dark pants. She is looking towards the camera. The background is a plain, light-colored wall.

THE SHIRTS

[ON HIM] MEN'S STRIPED SHIRT | SHT01-BLU

[ON HER] WOMEN'S DEFINITY SHIRT | TSW0-BLU



THE PERFECT FIT

From playful to practical, the Urban Collection's™ newest shirts bring style and attitude to servers, bartenders and brand ambassadors. There are causal t-shirts, whimsical patterns and comfortable fabrics that make work feel like play.

 ChefWorks
URBAN COLLECTION

[ON HIM] MEN'S STRIPED SHIRT | SHT01-BLU

[ON HER] WOMEN'S DEFINITY SHIRT | TSW0-BLU

A man with dark hair and a beard is leaning against a dark wood plank wall. He is wearing a red t-shirt with thin white horizontal stripes and a grey apron with a dark tie. His hands are in his pockets. The lighting is warm and focused on him.

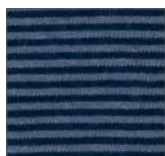
STRIPED T-SHIRTS

CASUAL NEVER LOOKED SO SMART

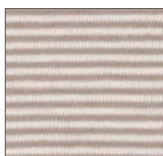
AVAILABLE COLORS



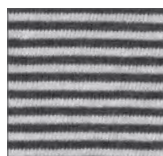
RED (red)



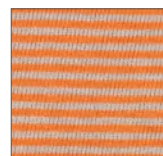
BLU (blue)



NAT (natural)



GRY (gray)



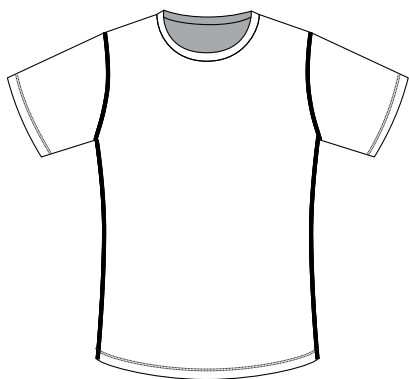
ORA (orange)

Pair the Striped T-Shirt with a waist, bistro or half bistro apron for an on-trend, front-of-house look. Or just throw on a bib apron and hit the back of the house.



MEN'S STRIPED T-SHIRT

Cool and confident, the Men's Striped T-Shirt can work for the front or back of the house. For cooks working the line, start with a t-shirt and pair it with one of our aprons. Or you can give your fast-casual property a relaxed yet unified look with five different colors to choose from.

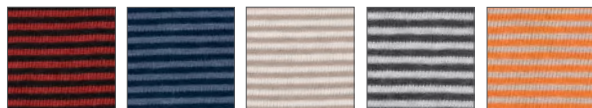


SPECIFICATIONS

- 4.4 oz. 60/40 cotton/poly
- Crew neck
- Short sleeves
- Curved hem
- Cover stitch detail

SF 1 SHT01 | S-4XL

AVAILABLE COLORS



RED (red)

BLU (blue)

NAT (natural)

GRY (gray)

ORA (orange)



CREW NECK

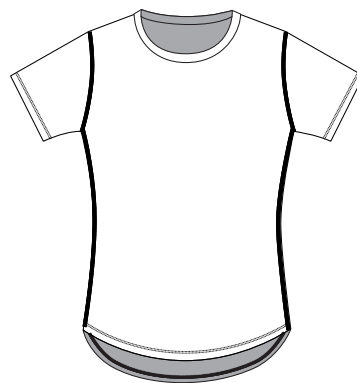


MEN'S STRIPED T-SHIRT | SHT01-BLU



WOMEN'S STRIPED T-SHIRT

Casual doesn't have to mean boring. The Women's Striped T-Shirt still has a comfortable and flattering female cut featuring a curved hem. The thin vertical lines add just enough visual texture to elevate it to "server chic."



SPECIFICATIONS

- 4.4 oz. 60/40 cotton/poly
- Crew neck
- Short sleeves
- Curved hem
- Cover stitch detail

SF 1 SHT01W | XS-3XL

AVAILABLE COLORS



RED (red) BLU (blue) NAT (natural) GRY (gray) ORA (orange)



CURVED HEM



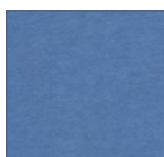
DEFINITY

SHIRTS

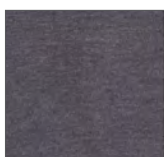
[ON HIM] MEDFORD BIB APRON | ABN02-NAT | MEN'S DEFINITY SHIRT | TSME-MSH [ON HER CENTER] MEDFORD HALF BISTRO APRON | AHN06-NAT | WOMEN'S DEFINITY SHIRT | TSW0-MSH
[ON HER RIGHT] MEDFORD SHORT BIB APRON | ABN02W-NAT | WOMEN'S DEFINITY SHIRT | TSW0-MSH

TO DEFINITY... AND BEYOND!

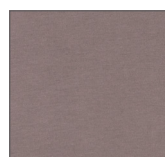
AVAILABLE COLORS



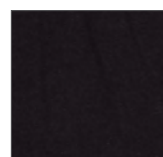
BLU (blue)



CHR (charcoal)



MSH (mushroom)



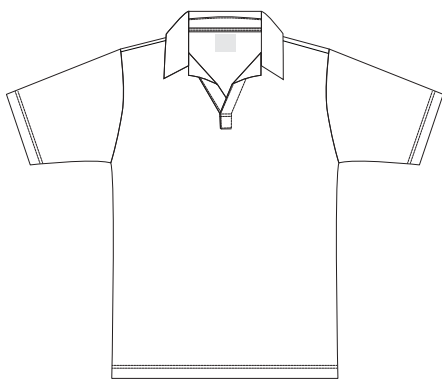
BLK (black)



Take your look to the next level with this stylish V-neck polo shirt. This dependable shirt is built to be comfortable. But it screams sophistication.

MEN'S DEFINITY SHIRT

Make a definitive statement in the front of the house with the Men's Definity Shirt. Short-sleeved and collared, this V-neck polo brings style and comfort to servers and bartenders while setting a casual yet fashionable tone for your brand.

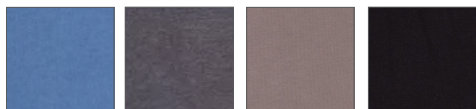


SPECIFICATIONS

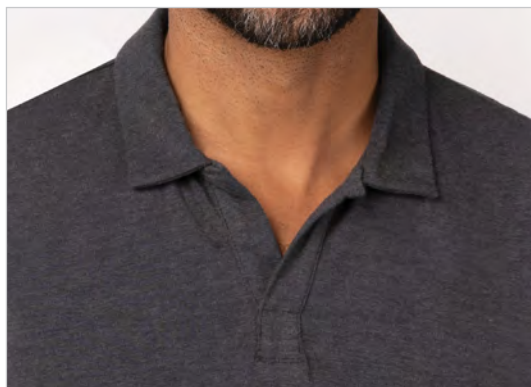
- 5 oz. 57/38/5 cotton/polyester/elastane
- V-neck polo
- Short sleeves
- Double-needle stitching
- Straight hem

FF 1 TSME | S-4XL

AVAILABLE COLORS



BLU (blue) CHR (charcoal) MSH (mushroom) BLK (black)



V-NECK POLO

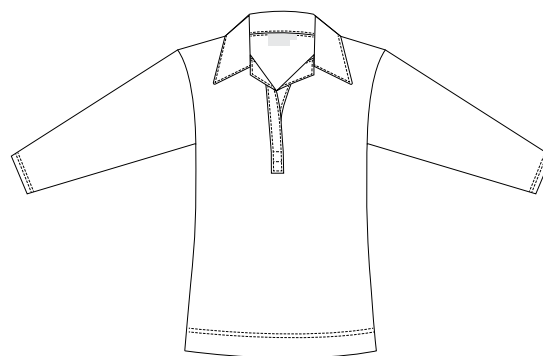


MEN'S DEFINITY SHIRT | TSME-CHR



WOMEN'S DEFINITY SHIRT

To Definity ... and beyond! Women, take your look to the next level with this stretch, stylish V-neck polo shirt. This elegant shirt was designed for all-day comfort and screams sophistication. Definitely choose Definity.

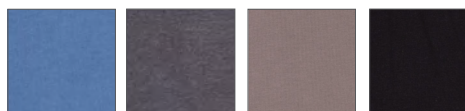


SPECIFICATIONS

- 5 oz. 57/38/5 cotton/polyester/elastane
- Three-quarter sleeves
- V-neck polo
- Fitted style

FF 1 TSWO | XS-3XL

AVAILABLE COLORS



BLU [blue] CHR [charcoal] MSH [mushroom] BLK [black]



THREE-QUARTER SLEEVES



OMAHA

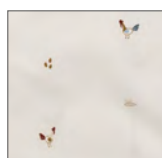
SHIRTS

WORK HARD, PLAY HARD AND HAVE *FUN* DOING BOTH

AVAILABLE COLORS



GRY (gray)



WHT (white)

Omaha seriously gets the job done, without taking itself – or you – too seriously.



FROM LEFT TO RIGHT: [ON HIM] MEN'S OMAHA SHIRT | SHC10-WHT | SEATTLE HALF BISTRO APRON | AHNO7-TAU [ON HIM] MEN'S OMAHA SHIRT | SHC10-WHT | SEATTLE BIB APRON | ABSO2-TAU
[ON HER] WOMEN'S OMAHA SHIRT | SHC10W-WHT | SEATTLE HALF BISTRO APRON | AHNO7-TAU [ON HER] WOMEN'S OMAHA SHIRT | SHC10W-WHT | SEATTLE BIB APRON | ABSO2-TAU

MEN'S OMAHA SHIRT

Hard-working – yet still sporting a sense of humor – the Men's Omaha Shirt promises to put in the overtime with you in the front or back of the house. The modern animal print is a fun conversation starter, or a tip of the cap to the job that you love.

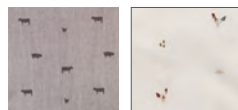


SPECIFICATIONS

- 65/35 poly/cotton
- Gray 3.5 oz./white 3.4 oz.
- Short sleeves
- Left chest pocket
- Back yoke with pleats
- Matching button front
- Contrast collar band, inner cuff + placket

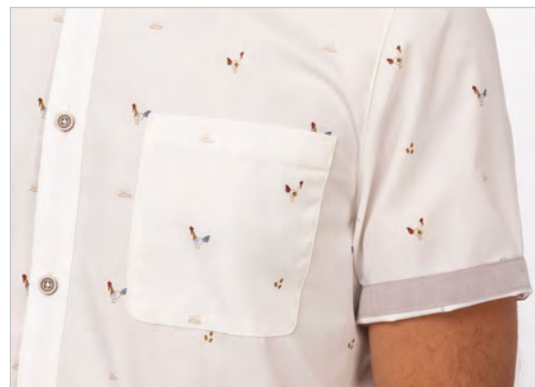
CF 1 SHC10 | S-4XL

AVAILABLE COLORS



GRY (gray)

WHT (white)



LEFT CHEST POCKET

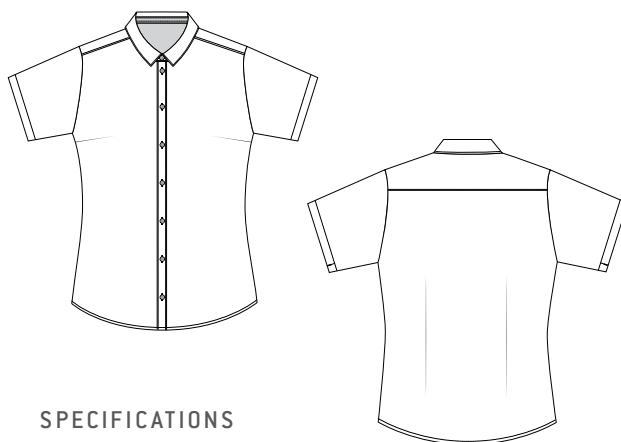


MEN'S OMAHA SHIRT | SHC10-WHT



WOMEN'S OMAHA SHIRT

Let your personality pop with the playful and modern animal print on the Women's Omaha Shirt. It's got all of the features that servers and bartenders need to succeed. This shirt has a feminine cut designed exclusively for women. Work hard, play hard and have fun doing both in the Women's Omaha Shirt.



SPECIFICATIONS

- 65/35 poly/cotton
- Gray 3.5 oz./white 3.4 oz.
- Short sleeves
- Matching button front
- Contrast collar band, inner cuff + placket
- Front & back darts

CF 1 SHC10W | XS-3XL

AVAILABLE COLORS



GRY (gray)



WHT (white)



CONTRAST COLLAR BAND



CHARLESTON

SHIRTS

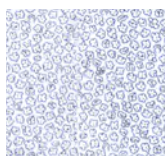
[ON HER LEFT] WOMEN'S CHARLESTON SHIRT | SHC07W-BLK | SYRACUSE WAIST BELT | XNN03-MUS [ON HIM] MEN'S CHARLESTON SHIRT | SHC07-BLK
[ON HER RIGHT] WOMEN'S CHARLESTON SHIRT | SHC07W-BLK | SYRACUSE WAIST BELT | XNN03-MUS

& FREE-FLOWING FREE-SPIRITED

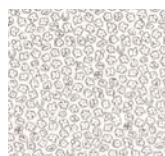
AVAILABLE COLORS



BLK (black)



BLU (blue)



NAT (natural)

Show your personality and stand out from the crowd with this playful ditsy print.



MEN'S CHARLESTON SHIRT

The Men's Charleston Shirt adds versatile details and a fun dimension for servers, bartenders and front-of-house brand ambassadors. Show your personality and stand out from the crowd with this playful ditsy print. But keep your cool with short sleeves and side-seam slits.

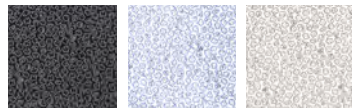


SPECIFICATIONS

- 3.4 oz. 65/35 poly/cotton
- Short sleeves
- Inner-sleeve contrast fabric band
- Inner-collar contrast fabric
- Matching button front
- Left sleeve pocket
- Back yoke with pleats for fit

CF 1 SHC07 | S-4XL

AVAILABLE COLORS



BLK (black)

BLU (blue)

NAT (natural)



INNER-COLLAR AND INNER-SLEEVE CONTRAST FABRIC



MEN'S CHARLESTON SHIRT | SHC07-BLU



WOMEN'S CHARLESTON SHIRT

Strike a balance between playful and professional with the Women's Charleston Shirt. The ditsy print makes it a fun addition to any apparel program. But it's the details and the features that truly make this shirt stand out. Designed exclusively for women, the Women's Charleston Shirt is sure to liven up the front of the house.



SPECIFICATIONS

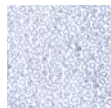
- 3.4 oz. 65/35 poly/cotton
- Short sleeves
- Collared v-neck
- Inner-sleeve contrast fabric band
- Inner-collar contrast fabric
- Matching button front
- Left sleeve pocket
- Front and back darts
- Back yoke

CF 1 SHC07W | XS-3XL

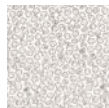
AVAILABLE COLORS



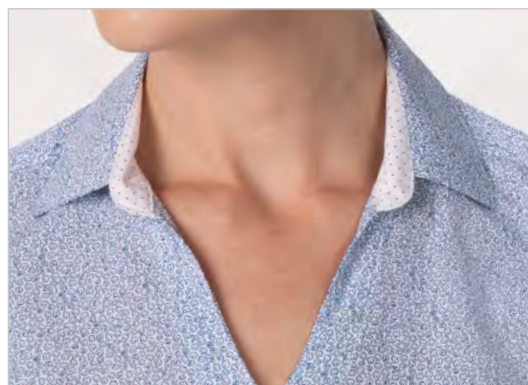
BLK (black)



BLU (blue)



NAT (natural)



COLLARED V-NECK



MALIBU

SHIRTS

[ON HER] WOMEN'S MALIBU SHIRT | SHC09W-NAV [ON HIM] MEN'S MALIBU SHIRT | SHC09-NAV

HOT NIGHTS CALL FOR *COOL* LOOKS

AVAILABLE COLORS



GRY (gray)



NAV (navy)

All the style and comfort you need to look and feel your best.



MEN'S MALIBU SHIRT

Whether you're cruising the Pacific Coast Highway, driving the Long Island Expressway or taking I-70 through America's heartland, the Men's Malibu Shirt will give you all of the SoCal feels. Go with confidence and style with a fun geometric print. Servers and bartenders will love this lightweight shirt.



SPECIFICATIONS

- 3.4 oz. 65/35 poly/cotton
- Short sleeves
- Left chest pocket
- Left sleeve pocket
- Button front
- Back yoke with pleats

CF 1 SHC09 | S-4XL

AVAILABLE COLORS



GRY (gray)

NAV (navy)

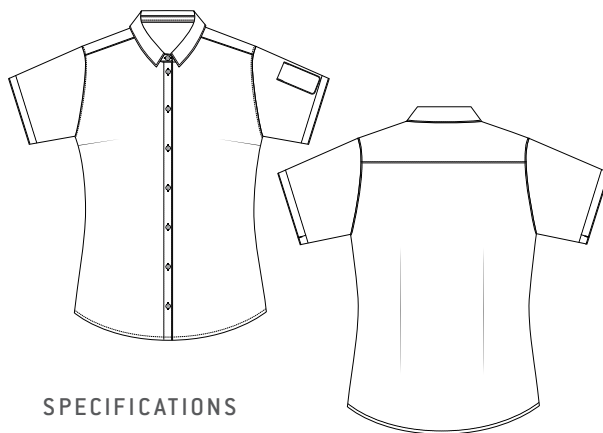


MEN'S MALIBU SHIRT | SHC09-NAV



WOMEN'S MALIBU SHIRT

The Women's Malibu Shirt gives you all of the style, fashion and function you need to look and feel your best. Servers and bartenders will love the attention to detail. And the geometric print is a personality statement. Plus it's designed by women for women.



SPECIFICATIONS

- 3.4 oz. 65/35 poly/cotton
- Short sleeves
- Left sleeve pocket
- Button front
- Front and back darts

CF 1 SHC09W | XS-3XL

AVAILABLE COLORS



GRY (gray)



NAV (navy)

MEN'S SHIRTS FIT & SIZING

SHIRT FITS

FF

Form Fit
A polished fit with stretch fabrics that silhouettes the body.

SF

Slim Fit
Sleeker, slimming fit that highlights the natural silhouette.

CF

Classic Fit
Broadly cut across the shoulders, cut wide through the chest and body, loose-fitting sleeves.

1

MEN'S/UNISEX SHIRTS

Chest (in)	32/34	36/38	40/42	44/46	48/50	52/54	56/58	60/62	64/66	68/70	72/74
Size	XS	S	M	L	XL	2XL	3XL	4XL	5XL	6XL	7XL
Chest (cm)	81/86	91/97	102/107	112/117	122/127	132/137	142/147	152/157	163/168	173/178	183/188



WOMEN'S SHIRTS FIT & SIZING

SHIRT FITS	FF	Form Fit A polished fit with stretch fabrics that fit snugly to the curve of the body.								
	SF	Slim Fit Figure-defining silhouette offers a sleeker, slimming fit.								
	CF	Classic Fit Easy fit silhouette skims the body with an updated drape for a professional, pulled-together look.								

1	WOMEN'S SHIRTS									
	Chest (in)	30/32	34/36	38/40	42/44	46/48	50/52	54/56	58/60	62/64
	Size	XS	S	M	L	XL	2XL	3XL	4XL	5XL
	Chest (cm)	76/81	86/91	97/102	107/112	117/122	127/132	137/142	147/152	157/163





Chef Works®

Chef Works Germany GmbH
Am Neubergsweg 12
D-63868 Großwallstadt

+49 6022 506 00 09
service@chefworks.de
www.chefwork.de